



# COGELSA ULTRAMATIC BTU

TECHNICAL DOCUMENTATION  
AND USAGE GUIDE

**COGELSA**  
EFFICIENT LUBRICATION

# DESCRIPTION AND APPLICATIONS

COGELSA ULTRAMATIC BTU is a battery-powered electromechanical lubricator that can be installed on a single lubrication point or coupled to a progressive distribution valve to lubricate up to 8 points. The lubricator automatically delivers a precise small amount of lubricant at regular intervals for a continuous supply of lubricant directly to the lubrication point.

COGELSA ULTRAMATIC BTU uses lubricant cartridges filled by COGELSA with a special procedure to ensure optimum lubricator performance. A wide range of COGELSA lubricants is available to cover most industrial applications. The lubricator suitable for 240 cm<sup>3</sup> cartridges is the COGELSA ULTRAMATIC BTU 240 and that suitable for 480 cm<sup>3</sup> cartridges is the COGELSA ULTRAMATIC BTU 480.

The lubricator incorporates an integrated visual feedback system that provides clear performance indicators and alerts in the event of any problems, ensuring reliability and ease of maintenance in a wide range of applications.

There are 6 basic frequency settings that are suitable for most industrial applications. They are programmed by installing one ring or a combination of the three colour synch rings in the ring holder attached to the brass fitting. When the COGELSA ULTRAMATIC BTU lubricator is screwed onto the brass fitting, the synch rings press the switches on the bottom of the lubricator. The combination of the pressed switches will determine the pumping frequency.

COGELSA ULTRAMATIC BTU is equipped with a pump designed to provide a powerful output pressure (25 bar) and is capable of pumping low and high viscosity lubricants at extreme temperatures. Thanks to its patented electromechanical technology, the system is safe against the negative consequences of back pressure in the system.



# DESCRIPTION AND APPLICATIONS

The device complies with ATEX Zone 2 and 22 regulations, making it a safe choice for industries operating in hazardous conditions. With IP66 compliance, it resists the ingress of dust and powerful jets of water, ensuring durability in harsh environments.

COGELSA ULTRAMATIC BTU can be used to lubricate mechanical components such as:

- Bearings.
- Spindles.
- Chains.
- Gearings.

## BENEFITS

### GREATER SAFETY

The high output pressure allows remote lubrication of difficult or dangerous lubrication points.

### IMPECCABLE RELIABILITY

The patented technology delivers the lubricant to the right place, at the right time and in the right quantity.

### COST SAVINGS

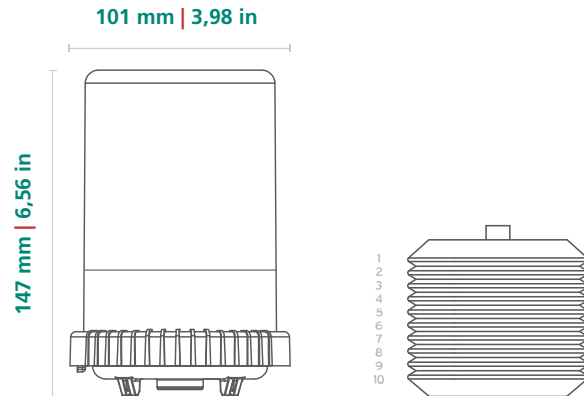
Reduced lubricant consumption minimises machine maintenance and operating costs.

### GREATER SUSTAINABILITY

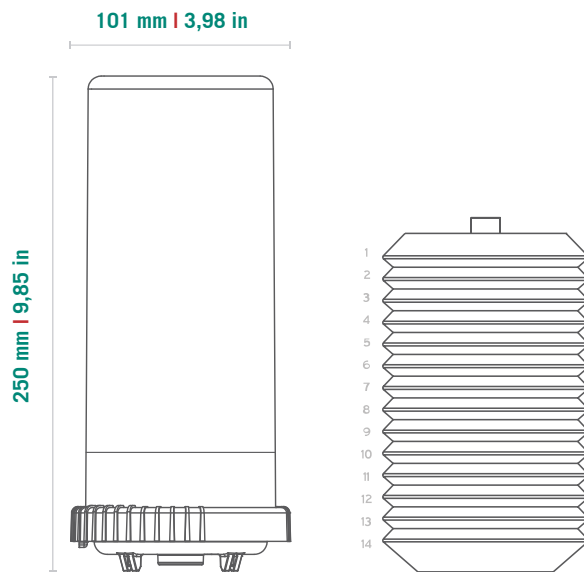
A reusable base unit, with a robust design that offers precise lubricant dispensing and placement, minimises waste of lubricant and other lubricator components.

# DIMENSIONS

**240 cc**  
Grease and oil cartridges

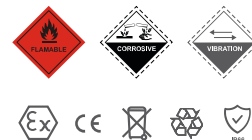


**480 cc**  
Grease and oil cartridges



## PRECAUTIONS

- Do not open the drive unit: spring loaded.
- Keep COGELSA ULTRAMATIC BTU pressed during manual checks.
- Leq <70 dB.
- Use COGELSA ULTRAMATIC BTU only for greasing machinery.
- Use only lubricant cartridges and batteries recommended by the manufacturer.



# CONFIGURATION

## FREQUENCY ADJUSTMENTS

COMBINATION OF THE COLOUR RINGS	DOSING FREQUENCY	MAXIMUM DAILY VOLUME	DOSING CHANGE V. CONTENT OF THE CARTRIDGE (240 CC)	DOSING CHANGE V. CONTENT OF THE CARTRIDGE (480 CC)
○+○+○	1 hour	14.4 cm <sup>3</sup> /day	0.5 months	1 month
○+○	2 hours	7.2 cm <sup>3</sup> /day	1 month	2 months
○+○	6 hours	2.4 cm <sup>3</sup> /day	3 months	6 months
○	12 hours	1.2 cm <sup>3</sup> /day	6 months	12 months
○+○	16 hours	0.9 cm <sup>3</sup> /day	8 months	16 months
○	24 hours	0.6 cm <sup>3</sup> /day	12 months	Not recommended



# INSTALLATION

## REMOTE INSTALLATION DISTANCES

TYPE OF INSTALLATION	MAXIMUM DISTANCE
Single point	8 m
Multi-point	6 m

# SPECIFICATIONS

## ELECTRICAL SPECIFICATIONS

	COGELSA ULTRAMATIC BTU
Power supply	Battery
Voltage	4.5 V DC (3 x 1.5 V DC AA)
Short-circuit protection	Yes
Expulsion duration	8 seconds
Minimum interval between expulsions	15 minutes



## OTHER SPECIFICATIONS

	COGELSA ULTRAMATIC BTU
Temperature exposure range	-15°C to 50°C*
Connections	1/4 BSP
Lubricants	Oil and grease (up to NLGI #2 with an oil base between 100 and 460 cSt)**
Maximum expulsion pressure	25 bar / 350 PSI

\*Batteries and lubricant adapted for low temperatures.

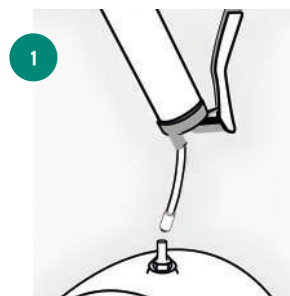
\*\* For any other viscosity level, please contact your local distributor.

## STATUS LIGHT

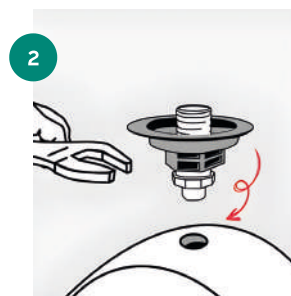
COLOUR	COGELSA ULTRAMATIC BTU
	The pumping cycle has been performed correctly.
	The motor/gearing are damaged or broken. Check the state of the battery.

# INSTALLATION GUIDE

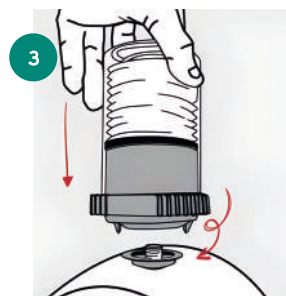
## DIRECT INSTALLATION



1 Prime the lubrication point with lubricant and remove the nozzle.



2 Install the ring holder on the lubrication point.

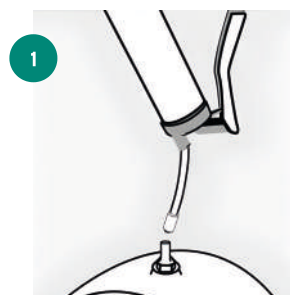


3 Install COGELSA ULTRAMATIC BTU on the ring holder.

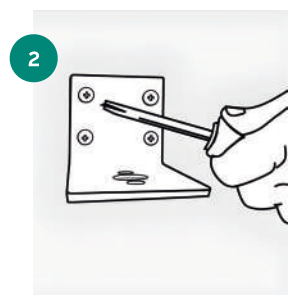


4 COGELSA ULTRAMATIC BTU works immediately

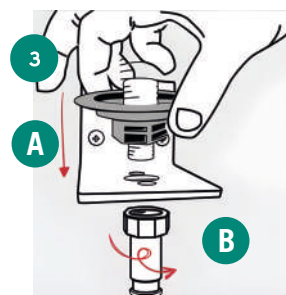
## REMOTE INSTALLATION



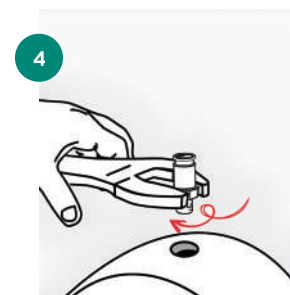
1 Lubricate the point and remove the nozzle.



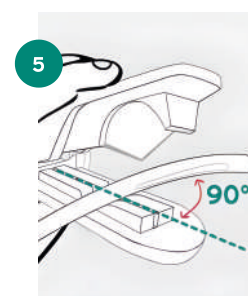
2 Fix the assembly bracket.



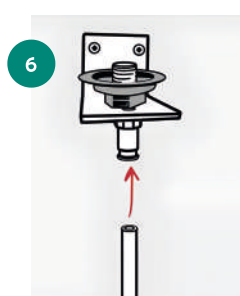
3 Install the base and F1/4 fitting on the bracket with a strong thread locker.



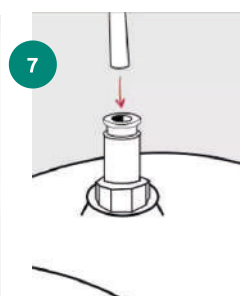
4 Screw the BSP 1/8 connection on the lubrication point.



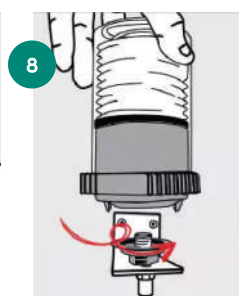
5 Cut the hose to the required size.



6 Insert the hose on the fast connector of the bracket. Prime the hose completely with lubricant.



7 Insert the hose on the fast connector of the lubrication point.

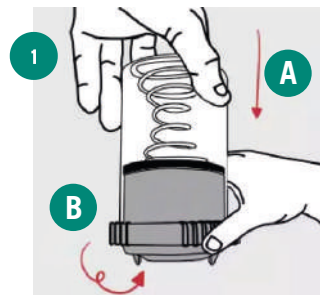


8 Install COGELSA ULTRAMATIC BTU on the ring holder.

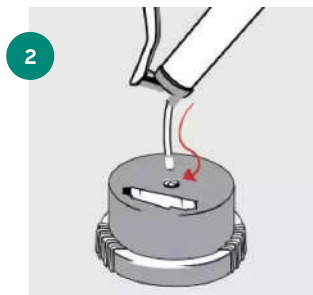


9 COGELSA ULTRAMATIC BTU works immediately.

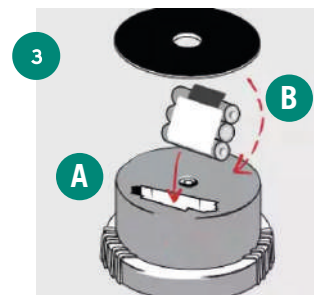
# CARTRIDGE REPLACEMENT



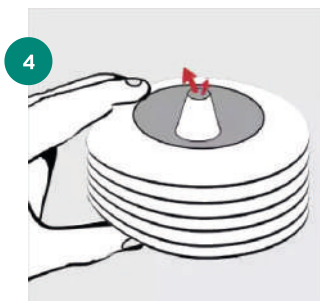
Open (fingers in the nerves).



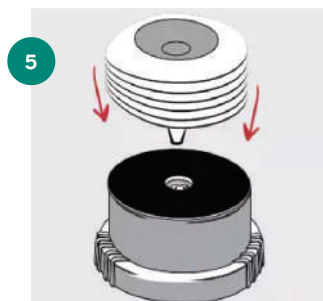
Prime the COGELSA pump ULTRAMATIC BTU.



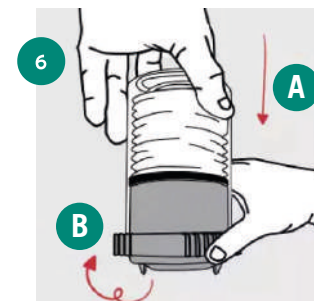
Insert the new battery and the seal. NB: the battery seal can be removed for 480 cc cartridges.



Squeeze the cartridge to expel the air.



Replace the cartridge in the COGELSA pump ULTRAMATIC BTU.



Close and lock (with the fingers in the nerves).

## HOW CAN I TEST AND/OR CHECK IF COGELSA ULTRAMATIC BTU WORKS?

You can check whether COGELSA ULTRAMATIC BTU is working properly at any time by unscrewing COGELSA ULTRAMATIC BTU one turn from the ring holder and screwing it back on. COGELSA ULTRAMATIC BTU will eject lubricant after mounting on the ring holder.

If the environment is too noisy, unscrew COGELSA ULTRAMATIC BTU from its holder and press one of the three switches on the bottom of the housing for a few seconds. COGELSA ULTRAMATIC BTU will then eject to confirm that the electronics, mechanics and batteries are working properly.

Perform this operation three times, pressing each switch at least once, to ensure that all three switches are working correctly and that the pump has been fully supplied with the correct lubricant. This operation must be carried out with a cartridge inside the COGELSA ULTRAMATIC BTU.

## WHAT DO I DO IF THE COGELSA ULTRAMATIC BTU AUTOMATIC LUBRICATOR DOES NOT WORK?

Is there a battery pack in COGELSA ULTRAMATIC BTU and is it correctly inserted?

Are the batteries working properly? Use another battery pack to check.

Is there one or more plastic rings inside the ring holder? If not, no switch will be activated and COGELSA ULTRAMATIC BTU will not work. Be sure to insert them correctly, as explained in the installation instructions.

## WHAT DO I DO IF NO LUBRICANT COMES OUT OF COGELSA ULTRAMATIC BTU?

If COGELSA ULTRAMATIC BTU is working, but no grease comes out of the automatic lubricator, check the following:

- Is there a lubricant cartridge inside COGELSA ULTRAMATIC BTU? If not, refill the unit with a cartridge as described in the installation instructions.
- Has the spring been correctly mounted inside the transparent housing? If not, reassemble as described in the installation instructions.
- Is the COGELSA ULTRAMATIC BTU pump primed? If the COGELSA ULTRAMATIC BTU cartridge was completely emptied before replacement, air may have entered the system and the pump may cavitate for several cycles. Place a grease gun on the suction valve of the unit and pump grease through the unit as explained in the installation instructions.

## WHAT DO I DO WHEN THE LUBRICANT CARTRIDGE IS NOT EMPTIED CORRECTLY?

If COGELSA ULTRAMATIC BTU works, but the lubricant cartridge does not empty or fails to do so at the expected time, one of the following problems may occur:

- The pipe is clogged. Use a hand gun to clean the pipes.
- One of the outputs from the distribution block has been voluntarily obstructed. Use bridging elements to reduce the number of outputs of a distribution block.
- The pipe is damaged. Replace the pipe.
- The back pressure at the outlet of COGELSA ULTRAMATIC BTU is higher than 20 bar. Observe pipe diameters, lengths, number of outlets per distribution block and working temperatures. Also use fittings with openings larger than 4 mm (0.157").
- At the working temperature, the base oil viscosity of the grease is above 10,000 cSt. Use low-temperature lubricants.

## WHAT DO I DO WHEN THE LUBRICANT DOES NOT REACH THE LUBRICATION POINT?







COGELSA ULTRAMATIC BTU works and empties correctly, but no lubricant reaches the lubrication point. Possible causes are:

- The pipe may be damaged. Check and replace if necessary.
- A fitting is not screwed on properly or the gasket is missing. Check and replace or add, if necessary.

## DOES COGELSA ULTRAMATIC BTU NEED SPECIAL MAINTENANCE?

COGELSA ULTRAMATIC BTU does not require any special maintenance. When used in damp or dusty atmospheres, COGELSA ULTRAMATIC BTU can be cleaned with compressed air or a damp cloth. To clean COGELSA ULTRAMATIC BTU, do not use solvents or immerse the unit in any liquid. It is also possible to equip COGELSA ULTRAMATIC BTU with a protective cover. For more information, please contact your local distributor.

# REGULATORY INFORMATION\*

SYMBOL	DESCRIPTION
	This product complies with Directives 2006/42/EU (machinery) and 2014/34/EU (equipment which may work in potentially explosive atmospheres - classification II 3 G for gases, II 3 D for dust). The corresponding declaration of conformity is available here [ <a href="https://memolub.eu/assets/uploads/Support/HPS/DoC-CE-HPS-2023.pdf">https://memolub.eu/assets/uploads/Support/HPS/DoC-CE-HPS-2023.pdf</a> ].
	This product complies with British Standards 2008 no. 1597 (machinery supply) and 2016 no. 1107 (equipment for use in potentially explosive atmospheres). The corresponding declaration of conformity is available here [ <a href="https://memolub.eu/assets/uploads/Support/HPS/DoC-UKCA-HPS-2023.pdf">https://memolub.eu/assets/uploads/Support/HPS/DoC-UKCA-HPS-2023.pdf</a> ].
	This product complies with customs union technical standards TR CU 010/2011 (machinery and equipment safety) and TP TC 012/2011 (safety of equipment for use in explosive atmospheres). The corresponding declaration of conformity is available here [ <a href="https://memolub.eu/assets/uploads/Support/HPS/DoC-EAC-HPS-2023.pdf">https://memolub.eu/assets/uploads/Support/HPS/DoC-EAC-HPS-2023.pdf</a> ].
	The WEEE symbol is affixed to the product in compliance with EU Directive 2012/19/EU on waste electrical and electronic equipment (WEEE). The aim is to discourage improper disposal of this product and to promote its reuse and recycling.
	Packaging material can be recycled. Please dispose of the packaging in an environmentally correct manner
	This product complies with EN IEC 600790-15 (nC IIC T6 Gc). This product complies with EN IEC 600790-31 (tc IIIC T85°C).

\*COGELSA ULTRAMATIC BTU is a product designed and manufactured by Memolub International in Brussels, Belgium.

# COGELSA

EFFICIENT LUBRICATION

C/ Comerç, 36  
Polígon industrial Can Sunyer  
08740 Sant Andreu de la Barca  
(Barcelona) - SPAIN  
Tel. +34 936822220  
info@cogelsa.com  
cogelsa.com



ISO 9001  
ISO 14001  
BUREAU VERITAS  
Certification

